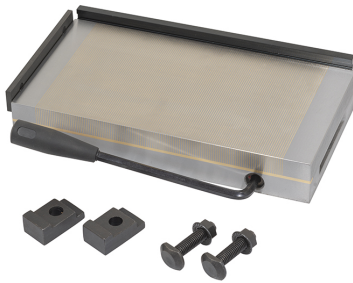


**ART. P078/1525**  
PERMANENT MAGNETIC CHUCK



WITH FIXED POLARITY. IT ALLOWS THE MACHINING OF SMALL AND LOW THICKNESS PIECES DUE TO FINE PITCH.



Dimensions	250 x 150 x 48 mm
Magnetic force	120 N/cm <sup>2</sup>
Pole pitch	0,5 + 1,5 mm
Net weight	16 Kg
Gross weight	16,00 kg
EAN Code	8012667386689



Wooden Box



Steel

Ташев-Галвинг ООД  
www.tashev-galving.com